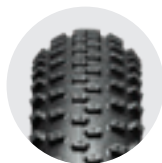


» XC14 TR



Colours

VECTRAN™ for
PUNCTURE BARRIER

OIL SILICA
TREAD COMPOUND

NEW

A TUBELESS READY TYRE INTENDED ESPECIALLY FOR XC RACES WITH MIXED TERRAIN CONDITIONS.

Thanks to the VECTRAN™ PUNCTURE BARRIER, the tyre has excellent puncture protection especially at the most vulnerable part – the sidewalls. A directional arrow-shaped tread pattern provides outstanding grip and fast cornering. Even wet roots and stones won't slow you down. A proven tyre at the World Cup.

TYRES

SIZE

WEIGHT

PRESSURE

TPI Count

Sidewall area / Under the tread

XC14 TR 29"

29×2.25"

650 g

2-3.5 bar (30-50 p.s.i.)

210 / 375