

# PERFORMANCE FUSION<sup>5</sup>

THE BENCHMARK TIRE

REF - P. 68

## DIMENSIONS

700 x 25  
700 x 28  
700 x 30

## CONCEPTS

ARAMID  
PRO TECH  
TUBETYPE  
TUBELESS  
READY

## SPECIFICATIONS

●●●●●●●●●●  
Comfort

●●●●●●●●●●  
Performance

●●●●●●●●●●  
Grip

●●●●●●●●●●  
Durability

●●●●●●●●●●  
Puncture  
resistance

●●●●●●●●●●  
Lightness

From  
190 GR

## COMPOUND

**STORM**  
INFERNAL COMPOUND

TAN  
SIDEWALLS

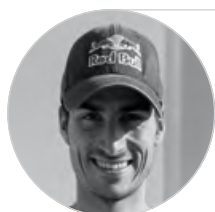


## STRENGTHS

• Perfect compromise between lightness and Aramid reinforcement • ElevenSTORM® compound concept associating grip and durability • From 190g, 127 TPI casing, groomed design.

## IN PRACTICE

The performance version of the Fusion 5 family is THE perfect harmony for all cyclists wishing to go fast and far. Associated with a Aramid reinforcement under the tread, it will reassure the most nervous and offer a durability superior to 4,000 km. In 700x25 section, you will find the perfect compromise between performance and comfort, grip and durability.



### ADVICE FROM A PRO

**Mario MOLA** - TSHORT-DISTANCE TRIATHLETE  
SHORT-DISTANCE TRIATHLON TRIPLE WORLD CHAMPION

« During Olympic Triathlon, race can be lost at any time and I need perfect components to be easy on my bike. Thanks to the Fusion 5 performance, I know I get the optimal grip and I don't fear punctures anymore »



# CONCEPTS



## TUBETYPE

### DESCRIPTION

- Tube type tire



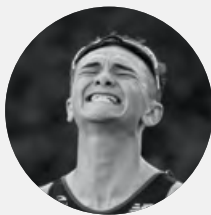
## TUBELESS READY

### DESCRIPTION

- Tubeless tire whose airtightness is guaranteed by Hutchinson Protect'Air Max latex sealant

### BENEFITS

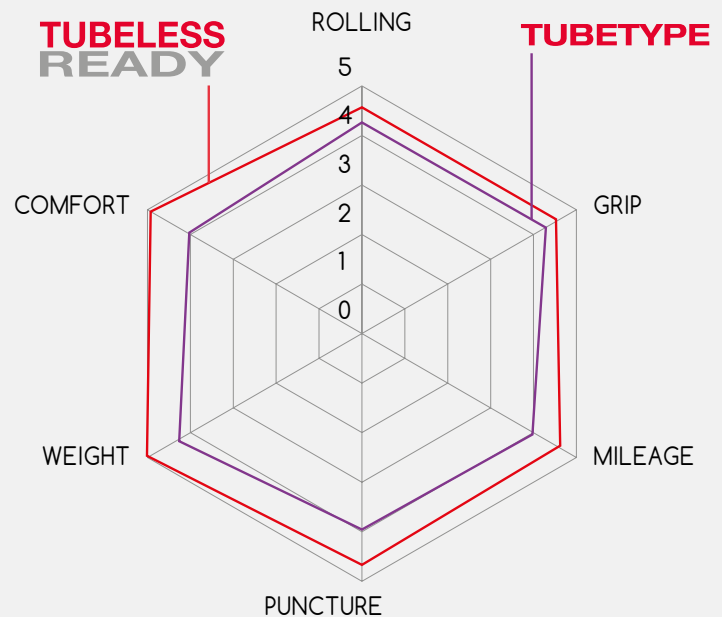
- Increased grip thanks to a greater deformation of the tire in curves.
- Improved performance due to the no internal frictions with an inner tube.
- Compatible with and without inner tube.
- Easy to mount.
- Lightness: from 240gr i.e. 20% lighter than a tire + inner tube kit.
- Puncture resistance: the absence of an inner tube eliminates the risk of punctures due to impact/pinch or burst. The Hutchinson latex sealant also refills micro-perforations.
- Comfort: Possibility to ride at lower pressure to better put up with the road's defects.



### ADVICE FROM A PRO

**Alex YEE** - SHORT-DISTANCE TRIATHLETE  
 2021 OLYMPICS SILVER MEDALIST/  
 2021 OLYMPICS MIXED RELAY CHAMPION

« I have been using the Hutchinson Tubeless tires for many years to train and ride miles. Reliability and comfort have always been the strengths of Tubeless tires. The weight and ease of mounting of the new Tubeless Ready have further improved the Tubeless concept. It's the ideal weapon for fondo riders! And since the end of my career, I can say that I am a fondo rider! »





## REINFORCEMENTS



### HARDSKIN

#### DESCRIPTION

- Reinforcement to avoid punctures, Hardskin fabric placed bead-to-bead and under the tread.

#### BENEFITS

- Safety: Coming from the MTB, this technology protects sidewalls from cuts and improves puncture resistance.



### ARAMID PRO TECH

#### DESCRIPTION

- 100% Aramid puncture reinforcement under the tread.

#### BENEFITS

- Safety: 50% improvement in puncture resistance.
- Performance: Adds puncture resistance without adding significant weight.



### REINFORCED

#### DESCRIPTION

- 100% polyamide puncture reinforcement under the tread.

#### BENEFITS

- Safety: Improved 25% puncture resistance.
- Performance: Adds puncture resistance without adding significant weight.

## FROM OUR LABORATORY TO YOURS



3 years of development and tests have been necessary to obtain the benchmark compound. Associated with the best casing and reinforcement, the ElevenSTORM® compound explores the most accomplished performance in terms of rolling, grip and mileage. Tested and approved in independent laboratories.

# ROAD TRIATHLON



**FUSION 5  
PERFORMANCE**  
P.14



**FUSION 5  
ALL SEASON**  
P.15



**SECTOR**  
P.17



**CHALLENGER**  
P.18



**NITRO 2**  
P.19



# ROAD - TRIATHLON

NEW	MADE IN FRANCE	PRODUCT NAME	DIMENSIONS	ETRTO	TECHNOLOGY	FB / WB	TT / TL	REINFORCEMENT	COMPOUND	COLOR	TPI	WEIGHT (G) +/-7%	ITEM CODE	PAGE
	FR	FUSION 5 Performance	700 x 25	25-622	Tubetype	FB	TT	KEVLAR ProTech	ElevenSTORM®	Black	127	200	PV527621	14
	FR	FUSION 5 Performance	700 x 25	25-622	Tubeless Ready	FB	TT/TL	Hardskin	ElevenSTORM®	Black	127	245	PV527721	14
	FR	FUSION 5 Performance	700 x 25	25-622	Tubetype	FB	TT	KEVLAR ProTech	ElevenSTORM®	Black/Tan Sidewalls	127	315	PV529041	14
	FR	FUSION 5 Performance	700 x 28	28-622	Tubetype	FB	TT	KEVLAR ProTech	ElevenSTORM®	Black	127	220	PV527691	14
	FR	FUSION 5 Performance	700 x 28	28-622	Tubeless Ready	FB	TT/TL	Hardskin	ElevenSTORM®	Black	127	270	PV527951	14
	FR	FUSION 5 Performance	700 x 30	30-622	Tubeless Ready	FB	TT/TL	Hardskin	ElevenSTORM®	Black	127	296	PV528791	14
	FR	FUSION 5 All Season	700 x 23	23-622	Tubetype	FB	TT	KEVLAR ProTech	ElevenSTORM®	Black	127	200	PV527561	15
	FR	FUSION 5 All Season	700 x 25	25-622	Tubetype	FB	TT	KEVLAR ProTech	ElevenSTORM®	Black	127	210	PV527651	15
	FR	FUSION 5 All Season	700 x 25	25-622	Tubeless Ready	FB	TT/TL	Hardskin	ElevenSTORM®	Black	127	260	PV527731	15
	FR	FUSION 5 All Season	700 x 28	28-622	Tubetype	FB	TT	KEVLAR ProTech	ElevenSTORM®	Black	127	230	PV527701	15
	FR	FUSION 5 All Season	700 x 28	28-622	Tubeless Ready	FB	TT/TL	Hardskin	ElevenSTORM®	Black	127	285	PV527961	15
	FR	SECTOR	700 x 28	28-622	Tubeless Ready	FB	TT/TL	-	Bi-Compound	Black	127	290	PV529681	17
	FR	SECTOR	700 x 32	32-622	Tubeless Ready	FB	TT/TL	Hardskin	Bi-Compound	Black	127	315	PV526311	17
NEW		CHALLENGER	700 x 25	25-622	Tubetype	FB	TT	Reinforced	Bi-Compound	Black	66	255	PV703911	18
NEW		CHALLENGER	700 x 28	28-622	Tubetype	FB	TT	Reinforced	Bi-Compound	Black	66	300	PV703921	18
NEW		CHALLENGER	700 x 28	28-622	Tubetype	FB	TT	Reinforced	Bi-Compound	Black/Tan Sidewalls	66	300	PV704201	18
NEW		CHALLENGER	700 x 30	30-622	Tubetype	FB	TT	Reinforced	Bi-Compound	Black	66	320	PV704051	18
		NITRO 2	700 x 23	23-622	Tubetype	WB	TT	-	Mono-compound	Black	33	320	PV699755	19
		NITRO 2	700 x 25	25-622	Tubetype	WB	TT	-	Mono-compound	Black	33	380	PV700365	19
		NITRO 2	700 x 28	28-622	Tubetype	WB	TT	-	Mono-compound	Black	33	380	PV700375	19
		NITRO 2	700 x 28	28-622	Tubetype	WB	TT	-	Mono-compound	Black/Tan Sidewalls	33	380	PV701965	19
		NITRO 2	700 x 25	25-622	Tubetype	FB	TT	-	Mono-compound	Black	66	350	PV702571	19
		NITRO 2	700 x 28	28-622	Tubetype	FB	TT	-	Mono-compound	Black	66	350	PV702581	19
		NITRO 2	700 x 28	28-622	Tubetype	FB	TT	-	Mono-compound	Black/Tan Sidewalls	66	350	PV704061	19