

GPM H40 DISC CARBON TUBELESS READY

ROAD / CHRONO / CYCLOCROSS / TRIATHLON

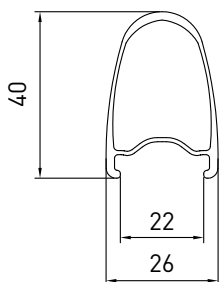
PESO COPPIA
WEIGHT OF THE SET
1560gr +/-5%



HAND MADE



PROFILE



CERCHIO RIM	ETRT0	O.L.D.	SISTEMA DI FRENATA BRAKE SYSTEM	VERSIONI VERSIONS	RAGGI SPOKES	NIPPLES	MOZZI HUB	TIPO DI CHIUSURA CLOSING SYSTEM	PESO WEIGHT
Copertoncino/TUBELESS READY Carbonio strutturale H40mm/L26mm	28" 700C / 622 22 din	12x142	Disc Centerlock	Sh. Campa Sram XDR	Nr.24 sfinati piatti Inox Diam.:2/1,5/2mm	Nere	Forgiato nr. 4 cuscinetti ad alta rotazione	Perno passante 12mm	Post. 890 gr +/-5%
Copertoncino/ TUBELESS READY Carbonio strutturale H40mm/L26mm	28" 700C / 622 22 din	12x100 15x100	Disc Centerlock	-	Nr.24 sfinati piatti Inox Diam.:2/1,5/2mm	Nere	Forgiato su nr. 2 cuscinetti ad alta rotazione	Perno passante 12mm	Ant.690 gr +/-5%
Clincher/TUBELESS READY Structural carbon fibre H40mm/ L26mm	28" 700C / 622 22 din	12x142	Disc Centerlock	Sh. Campa Sram XDR	Nr.24 Aero double size Stainless steel inox Diam.:2/1,5/2mm	Black	Forged nr. 4 high rotation Sealed Bearings	Through Axle 12mm	Rear 890 gr +/-5%
Clincher/TUBELESS READY Structural carbon fibre H40mm/ L26mm	28" 700C / 622 22 din	12x100 15x100	Disc Centerlock	-	Nr.24 Aero double size Stainless steel inox Diam.:2/1,5/2mm	Black	Forged nr. 2 high rotation Sealed Bearings	Through Axle 12mm	Front 690 gr +/-5%